

# “ErgoTorq” Product Quote Form

## Customer Information

Company : \_\_\_\_\_ Contact: \_\_\_\_\_ Phone # : \_\_\_\_\_ Fax # : \_\_\_\_\_  
 Address : \_\_\_\_\_ Date : \_\_\_\_\_ E-mail : \_\_\_\_\_

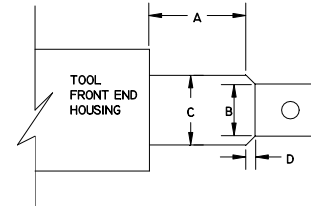
## Pulse Tool Guided Sockets & “Adaptors” Quote Information

*(for Pistol Grip & Straight Nutrunner Tooling)*

### Tool Anvil dimensions to three (3) decimal places. (0.000)

Tool Manufacturer : \_\_\_\_\_ A = \_\_\_\_\_ B = \_\_\_\_\_

Tool Model Number : \_\_\_\_\_ C = \_\_\_\_\_ D = \_\_\_\_\_

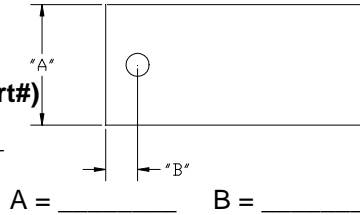


### Socket dimensions to three (3) decimal places. (0.000)

Manufacturer : \_\_\_\_\_ Part Number : \_\_\_\_\_

Sq. Drive Size : \_\_\_\_\_ Order Piece Qty. : \_\_\_\_\_ (min. 5 pcs./Part#)

Adaptor Application : Tool > Socket \_\_\_\_\_ Extension > Socket \_\_\_\_\_



### **Restricted O.D.'s**

On applications with restricted socket O.D.'s, Please provide the maximum allowable O.D. dimension to three decimal places.

**Max.O.D. :** \_\_\_\_\_

## Nutrunner Tool Guided Extension “Collar” Quote Information

*(for Anglehead, In-line & Pistol Grip Nutrunner Tooling)*

Tool Manufacturer : \_\_\_\_\_ Tool Model Number : \_\_\_\_\_ Tool Square Drive Size : \_\_\_\_\_

Tool Front Nut or Reaction Bar Nut Part # : \_\_\_\_\_ Extension Sq. Drives : \_\_\_\_\_ Extension Length : \_\_\_\_\_

Order Piece Qty. : \_\_\_\_\_

## Nutrunner Tool Socket “Pinchpoint Protector” Quote Information

*(for Anglehead, In-line & Pistol Grip Nutrunner Tooling)*

Tool Manufacturer : \_\_\_\_\_ Tool Model Number : \_\_\_\_\_ Tool Square Drive Size : \_\_\_\_\_

Tool Front Nut or Packing Cap Part # : \_\_\_\_\_ Socket Manufacturer : \_\_\_\_\_ Socket Part# : \_\_\_\_\_

Order Piece Qty. : \_\_\_\_\_

## Nutrunner tool “Non-Rotating Attachment Cover” Quote Information

*(for Anglehead, In-line & Pistol Grip Nutrunner Tooling)*

Tool Manufacturer : \_\_\_\_\_ Tool Model Number : \_\_\_\_\_ Tool Square Drive Size : \_\_\_\_\_

Tool Front Nut or Reaction Bar Nut Part # : \_\_\_\_\_ Extension Sq. Drives : \_\_\_\_\_ Extension Length : \_\_\_\_\_

Socket Manufacturer : \_\_\_\_\_ Socket Part# : \_\_\_\_\_ Order Piece Qty. : \_\_\_\_\_

## “Slip-Type Attachment Cover” Quote Information

Attachment Manufacturer : \_\_\_\_\_ Part # : \_\_\_\_\_ Square drive Size: \_\_\_\_\_ Largest O.D.: \_\_\_\_\_

Overall Length : \_\_\_\_\_ Order Piece Qty. : \_\_\_\_\_ (min. 5 pcs./Part#)

## Special Order “Ultralite” & Standard Weight Extension Quote Information

Female Drive Required : \_\_\_\_\_ Male Drive Required : \_\_\_\_\_ Overall Length of Extension : \_\_\_\_\_

Maximum Applied Torque : \_\_\_\_\_ Order Piece Qty. : \_\_\_\_\_ (min. 5 pcs./Part#)

Extension Type : **Standard** Weight \_\_\_\_\_ *“Ultralite”* \_\_\_\_\_

Square drive Type : **Standard** for Nutrunner Tooling \_\_\_\_\_ **Guided** for Pulse Tooling \_\_\_\_\_ Pulse Tool Manufacturer \_\_\_\_\_

## “Dual-drive Socket” Quote Information

*(for Anglehead, In-line & Pistol Grip Nutrunner Tooling)*

Tool Square Drive Size : \_\_\_\_\_ Maximum Applied Torque : \_\_\_\_\_ Large Fastener Size : \_\_\_\_\_

Small Fastener Size : \_\_\_\_\_ Order Piece Qty. : \_\_\_\_\_